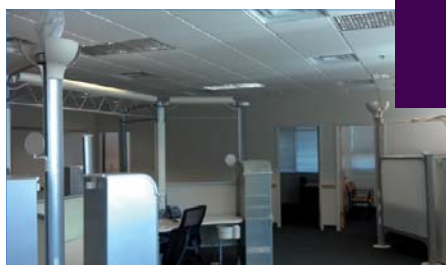


GATEWAY UNIVERSITY RESEARCH PARK



Research Facility One



Wet Lab at Gateway's NanoBio Launchpad

NanoBio Launchpad
2901 Gate City Boulevard
Greensboro, North Carolina 27401

Gateway University Research Park is a premier campus for basic and applied research in Greensboro and North Carolina's Piedmont Triad region. Gateway is a collaboration between North Carolina A&T State University and The University of North Carolina Greensboro. Gateway is developing state-of-the-art research facilities for work in areas of life and physical science, engineering and other applied sciences. Facilities feature highly specialized equipment to enhance ongoing University-based research and to attract companies seeking affordable access to this equipment in a collaborative research environment.

Individual Offices

Workstations

Shared Lab

Month-to-Month Leases

Telephone and Internet Included

Expansion Capabilities

CONTACT:

John R. Merrill

Executive Director

Main: 336-375-9232

Fax: 336-375-9661

johnm@gatewayurp.com

www.GatewayURP.com



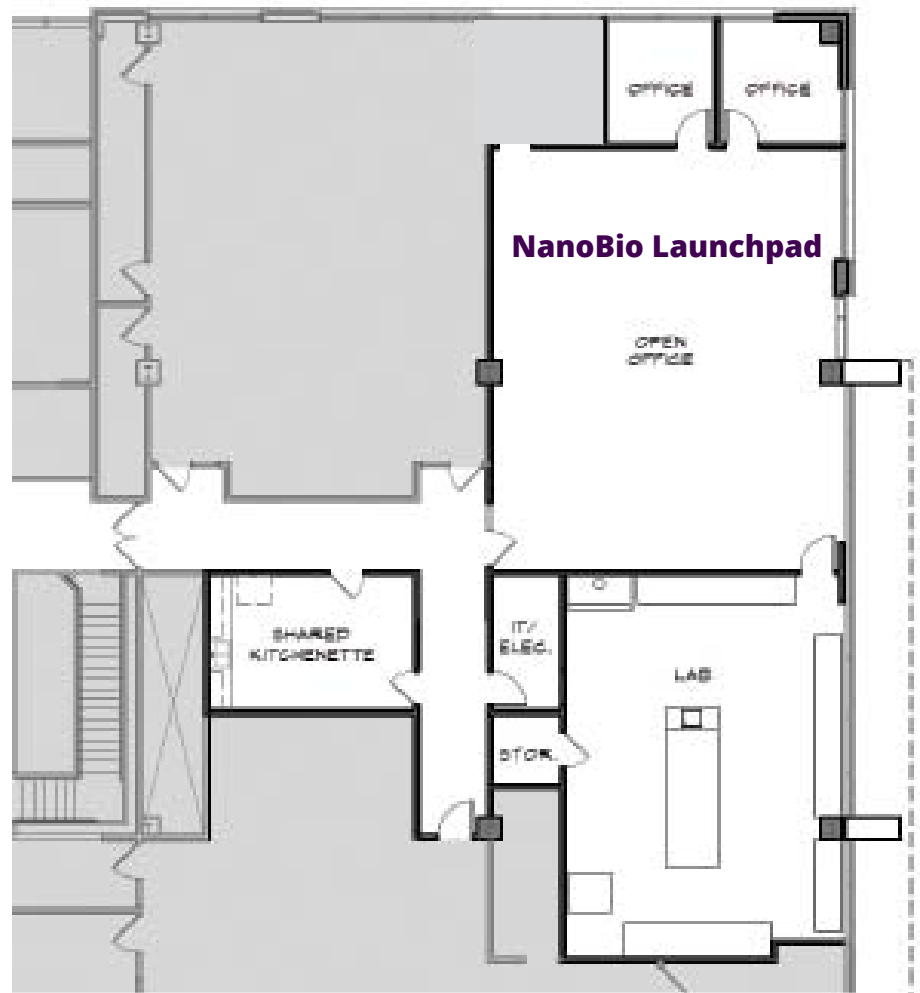
Research Facility One

Located at Gateway's South Campus location, Research Facility One is two and one-half stories; 63,000 square feet. The building opened in 2008. Tenants include U.S. Department of Agriculture (Natural Resource Conservation Service and East National Technical Support Center), Advaero Technologies and Gateway's administrative offices.

Research Facility Two

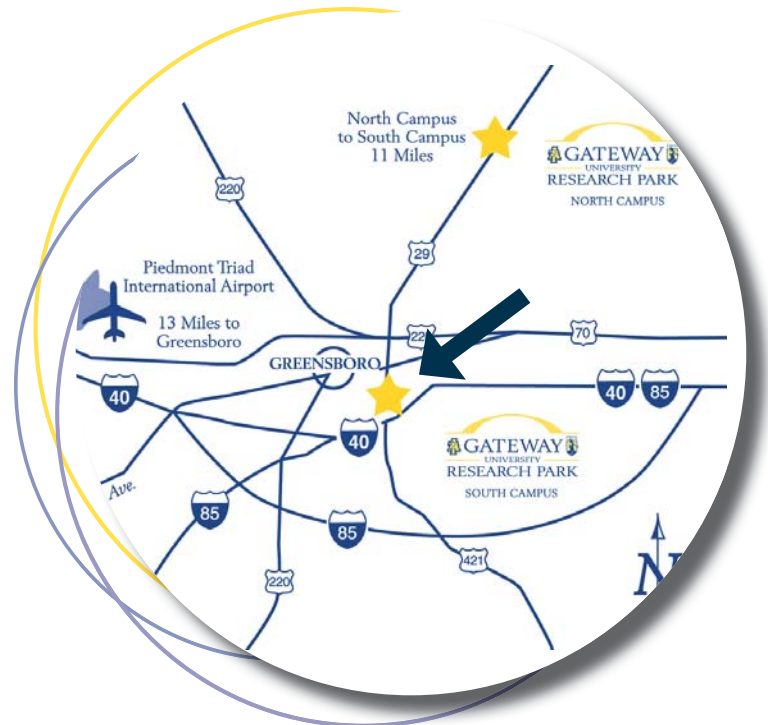
Also located at Gateway's South Campus location is Research Facility Two, **home of the Joint School of Nanoscience and Nanoengineering ("JSNN")**.

The building opened in December 2011 and is 105,000 SF interdisciplinary research facility dedicated to academic and industrial research and development activities. The JSNN contains specialized nanotechnology resources, such as a nanobioelectronics cleanroom, nanocharacterization labs, a computation and visualization facility and conventional science and engineering facilities.



Prime South Campus Location

- Located **within one-half mile of the I-40 / I-85 corridor**, which runs from Washington, D.C. and Atlanta, and **2.8 miles to downtown Greensboro, NC**.
- Situated on 75 acres and master planned for 12 buildings, and 550,000 SF when fully built out. **Two facilities currently in operation and one under construction.**
- **Ideal location for technology associated companies.**
- Tenant benefits include access to **high performance broadband IP connectivity, teleconferencing, 232-seat auditorium, and event/meeting/training spaces.**
- Within minutes from North Carolina A&T State University and The University of North Carolina at Greensboro.
- Located across from **Greensboro's Barber Park complex, Gateway Gardens, and the Hayes-Taylor Memorial YMCA.**



SOUTH CAMPUS:
2901 East Gate City Blvd., Suite 2500
Greensboro, NC 27401-4904

336.375.9232 Tel
336.375.9661 Fax
www.GatewayURP.com

NORTH CAMPUS:
5900 Summit Avenue
Greensboro, NC 27214