



NANOMANUFACTURING INNOVATION CONSORTIUM

A Program of the Joint School of Nanoscience and Nanoengineering (JSNN)
Administered by Gateway University Research Park

The Nanomanufacturing Innovation Consortium (NIC) strives to be a global leader in nanomanufacturing research. It provides access to unique state-of-the-art capabilities for product development, analytical services, materials testing, analysis, and evaluation to address the diverse needs of consortium members. NIC members gain visibility into the Joint School of Nanoscience and Nanoengineering's (JSNN) ongoing research in nanobiology, nanomaterials, and cleanroom technologies, e.g. sensors, MEMS, thin films and electronic materials and devices. All consortium members will have access to JSNN facilities and have extensive networking opportunities. Memberships will be provided at three levels; **Affiliate, Full Member - Nanobiology and Nanomaterials, and Full Member - Cleanroom.**

According to a recent report released by the Project on Emerging Nanotechnologies (PEN), more than 1,200 companies, universities, government laboratories, and other organizations across all 50 U.S. states and in the District of Columbia are involved in nanotechnology research, development, and commercialization. This number is up 50 percent from just two years ago. In fact, areas of North Carolina have broken into the top rankings for the first time. The goal of the NIC is to make the Piedmont Triad region THE PLACE for Nanomanufacturing expertise.

Local Synergy

The Greensboro Economic Development Alliance (GEDA) has identified **Aviation, Advanced Manufacturing & Materials, and the Life Sciences** as targeted clusters for cultivating high-wage, high-growth jobs. Each of these clusters can be mapped into the activities of the NIC, making the NIC another job creation tool for our community that will help create a vibrant future for Greensboro, Guilford County, and the Piedmont Triad region.

Membership

Potential Members include, companies engaged in nanomanufacturing, companies that produce nanoparticles, nanofibers, films or other raw nanomaterials, companies that produce machinery used for nanomanufacturing, companies that use nanomaterials in the manufacture of goods, U.S. government organizations that have an interest in nanotechnology and nanomanufacturing and organizations engaged in research, economic development or collaboration where nanotechnology is critical to their success.



7,000 Square Foot Cleanroom Facility



Access to University Faculty and Researchers



SOUTH CAMPUS:
2901 East Gate City Blvd., Suite 2500
Greensboro, NC 27401-4904

336.375.9232 Tel
336.375.9661 Fax
www.GatewayURP.com

NORTH CAMPUS:
5900 Summit Avenue
Brown Summit, NC 27214

Full Members will pay an annual membership fee and are entitled to specified access to the JSNN Facilities at no additional charge, based on their category of Full Membership.

Affiliate Members pay a lower annual membership fee to the Consortium than Full Members and are entitled to access to the JSNN Facilities, but must pay a per use fee. The laboratory access rates may change from time to time and will be available through a website maintained by the Gateway University Research Park.

Member Benefits

- Access to JSNN equipment (based on Membership Category)
- Signage throughout Gateway's public spaces (both North and South campuses)
- Free access to Gateway's meeting and conference facilities (both North and South campuses):
 - 232-seat Auditorium
 - Teleconferencing
 - Atrium space (perfect for receptions)
 - Multiple conference rooms and meeting spaces
- Invitation to the NIC annual meeting
- Invitation to multiple academic seminars throughout the year
- Access to "VIP" tours of the JSNN facility

Three (3) levels of membership available providing varied levels of access to JSNN facilities, cleanroom, laboratories, and equipment.



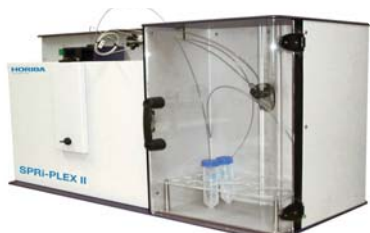
Carl Zeiss SMT ORION® PLUS
Helium Ion Microscope

About the Joint School of Nanoscience and Nanoengineering

The Joint School of Nanoscience and Nanoengineering (JSNN) is a collaboration between North Carolina Agricultural and Technical State University and The University of North Carolina at Greensboro. This newest two-story research facility features extensive labs, a clean room, a 3-D visualization suite, and a large suite of high-tech tools including a Carl Zeiss SMT® Orion Helium Ion microscope – the only one of its kind in the Southeastern United States. The JSNN offers a Master of Science in Nanoengineering, a Ph.D. in Nanoengineering, a Professional Master of Science in Nanoscience, and a Ph.D. in Nanoscience. JSNN's research focus areas include: NanoBioscience, NanoMetrology and Modeling, NanoMaterials, NanoBioelectronics, NanoEnergy, and Computational Nanotechnology.

About Gateway University Research Park

Gateway University Research Park (Gateway) is a premier campus for basic and applied research in Greensboro and North Carolina's Piedmont Triad region. Gateway is a collaboration between North Carolina A&T State University and The University of North Carolina Greensboro. Gateway is developing state-of-the-art research facilities for work in areas of life and physical science, engineering and other applied sciences. Facilities feature highly specialized equipment to enhance ongoing University-based research and to attract companies seeking affordable access to this equipment in a collaborative research environment.



Horiba SPRi Surface Plasma Resonance System



Agilent/Oxford Gemini Diffractometer



OAI 8808 Mask Aligner w/ DUV upgrade

**To begin your Membership, please contact
Dr. Dan Herr at djherr@uncg.edu, or
Mr. John Merrill at 336-375-9232 or JohnM@GatewayURP.com.**